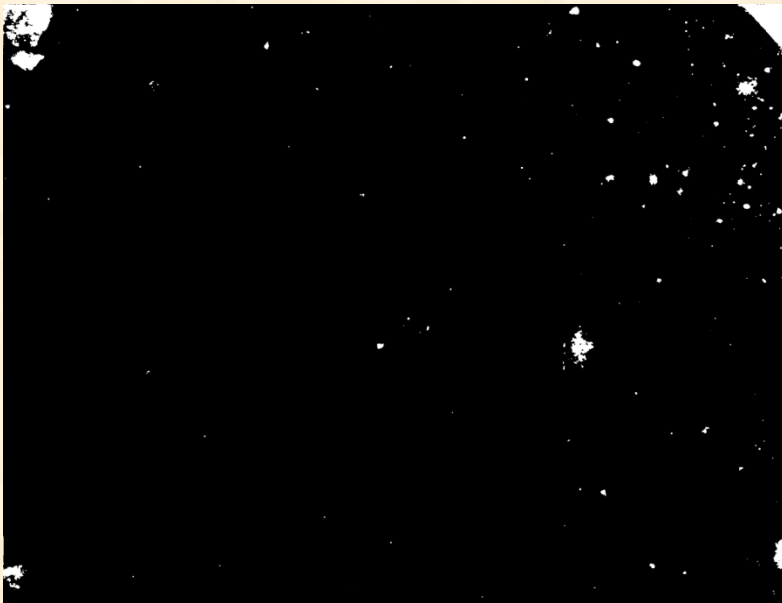
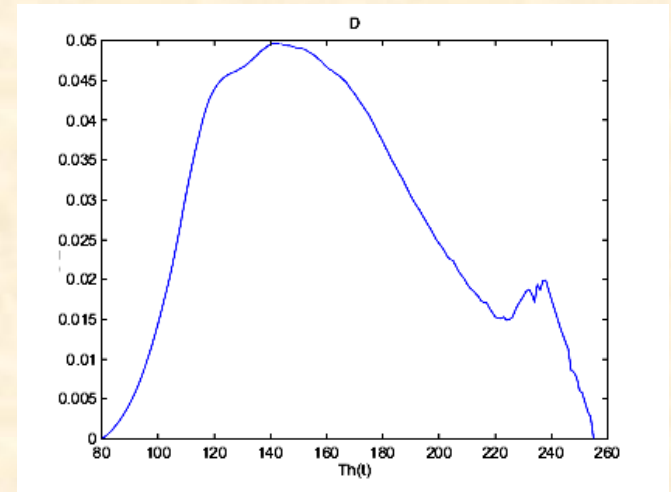
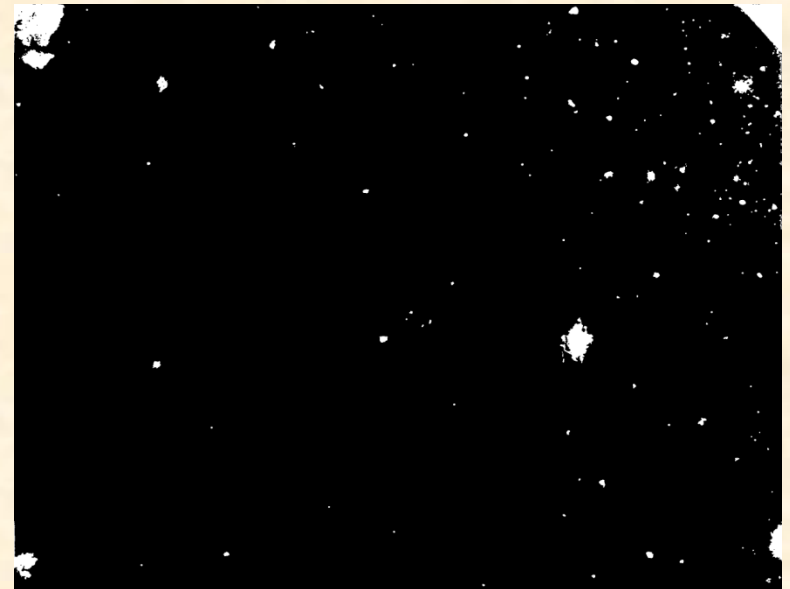


Experimental results

Sepia toned images from the Fratelli Alinari Archive in Florence



global detection



local adjustment

Experimental results



Original image



Projection into the
optimal space for vision



Detection mask

Experimental results



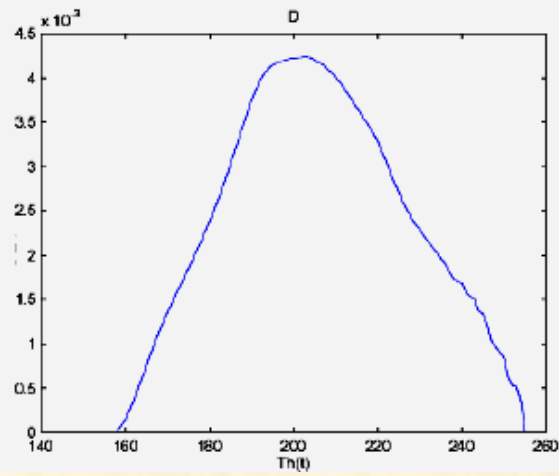
Original image



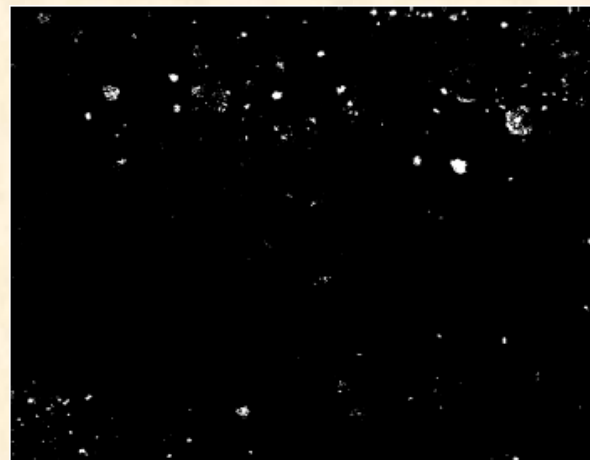
Saturation



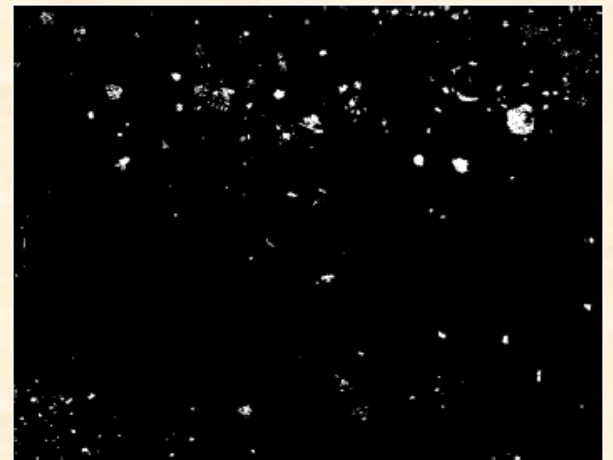
Optimal projection space



Distortion



Global detection mask

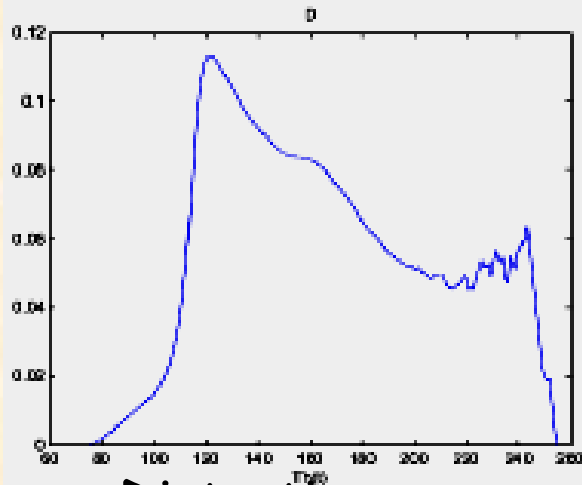
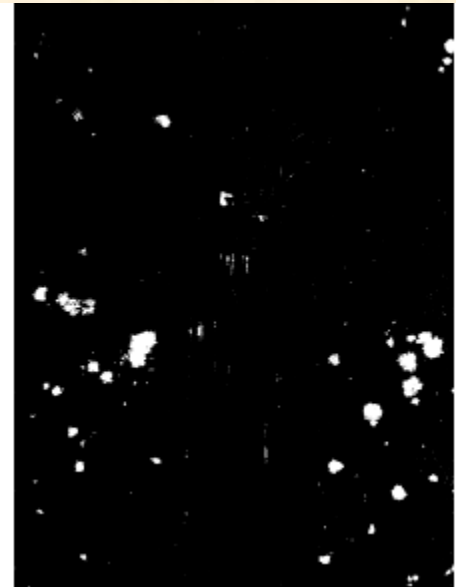
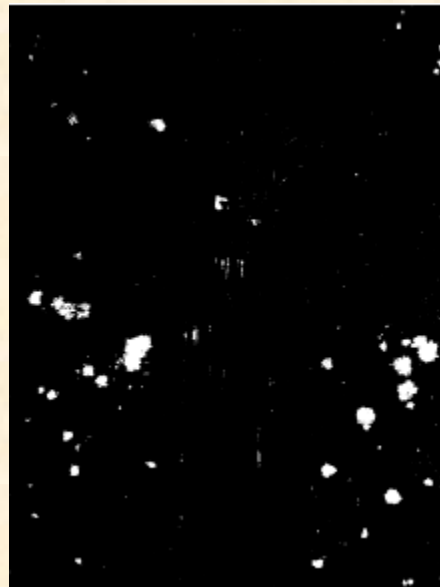


Refined detection mask

Experimental results

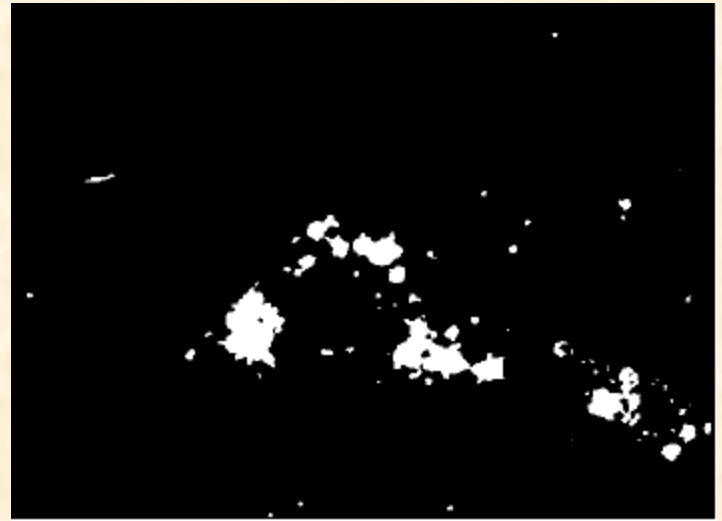
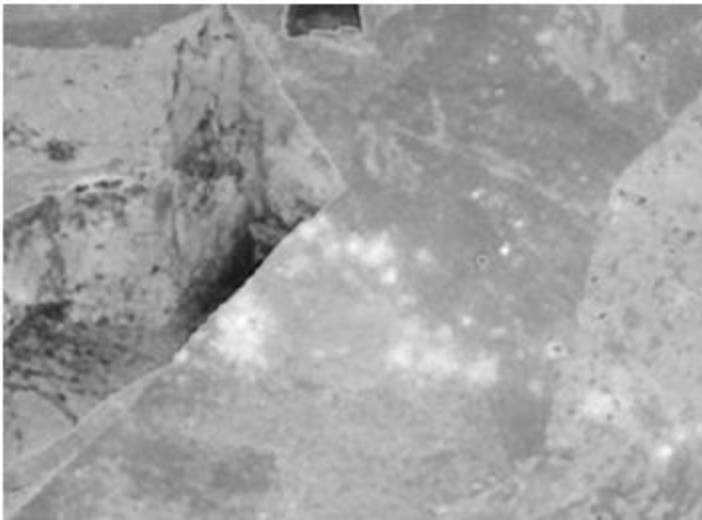


Original image



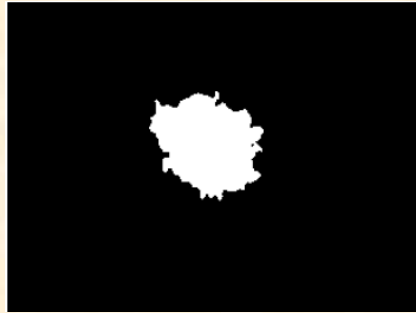
Distortion

Experimental results



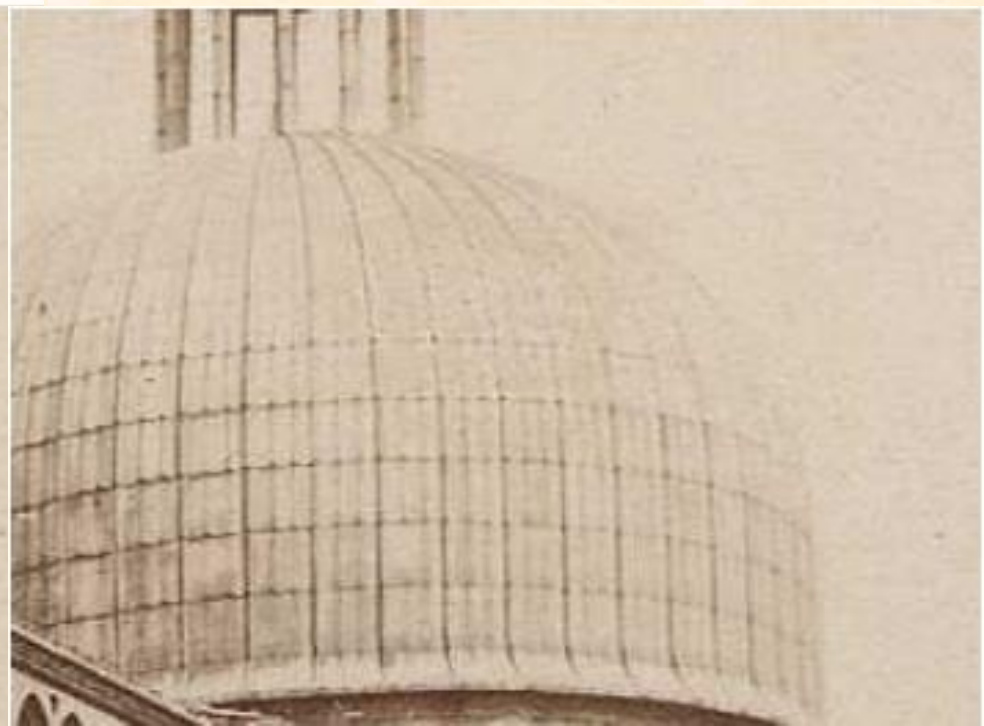
Experimental Results

The same measures can be used for the removal blotches
(they also confirm the correctness of the detection result)



original

restored



Experimental Results

The same measures can be used for the removal blotches
(they also confirm the correctness of the detection result)

original



restored



Experimental Results

The same measures can be used for the removal blotches
(they also confirm the correctness of the detection result)

original

restored

